



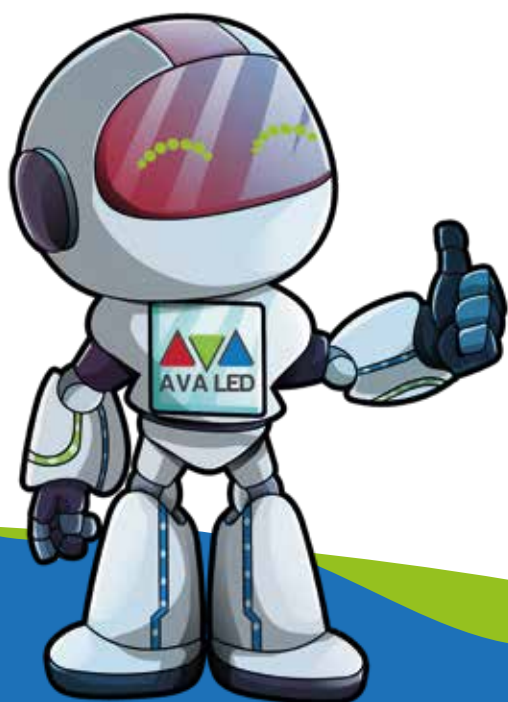
AVA LED

Transparent P15

P15,62 / P31,25

Data Sheet

QUALITY IN DETAIL



TRANSPARENT LED SCREEN

Indoor Transparent Series

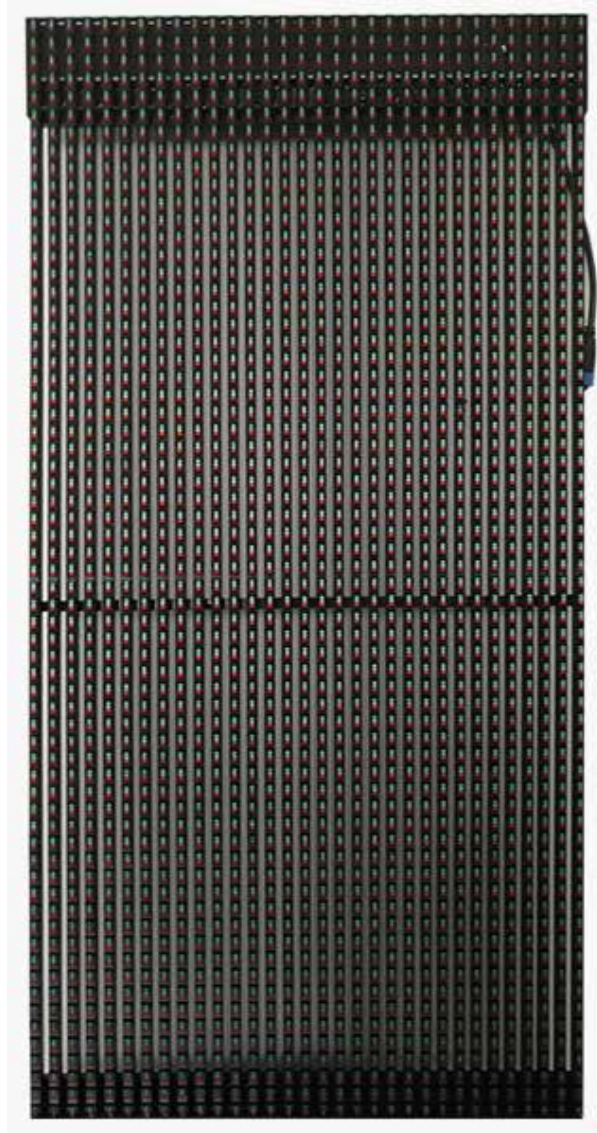
P15,62 / P31,25





- 02 - 04 ○ Features
- 05 ○ Specification
- 06 - 08 ○ Vision - Products Detail
- 09 ○ Safety
- 10-11 ○ Installation - Size
- 12-13 ○ Photo- Company Info

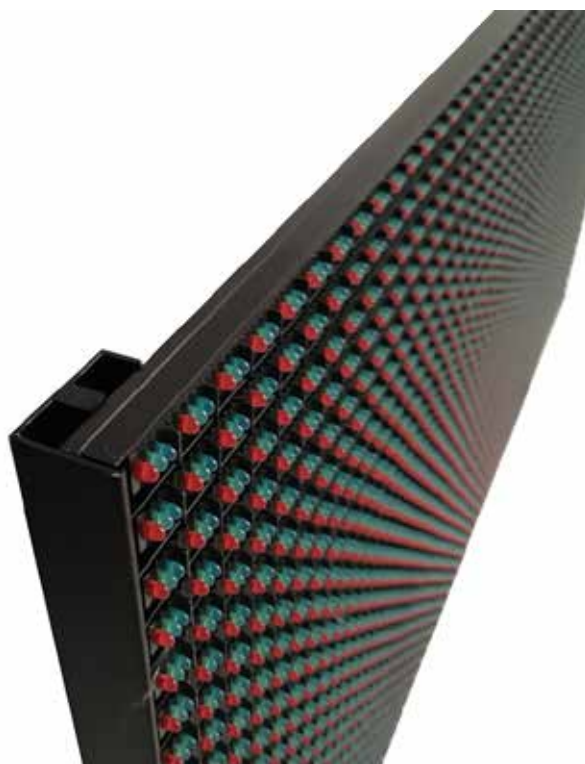
- * Cabinet Size : 500x1.000mm
- * Transparent Systems
- * Easy and fast instalation
- * A Class LED Chip
- * +14/16 Bit
- * Best Quality Pcs
- * Very thin case structure
- * Very Light Weight
- * Fixed installation outside.
- * Outdoor/indoor wall curtain
- * Screen Brightness
- * support in front of the maintenance and rear maintenance
- * Slim Powersupply



P15,62 / P31,25 Outdoor Transparent Screen

- *** Weight : 9kg
- *** Dimension : 1000mm x 500mm x 50mm
- *** Front / Back Services
- *** SQM: 2.048 Pixel
- *** Nova Star Controller
- *** DIP 346
- *** High Brightness

FEATURES



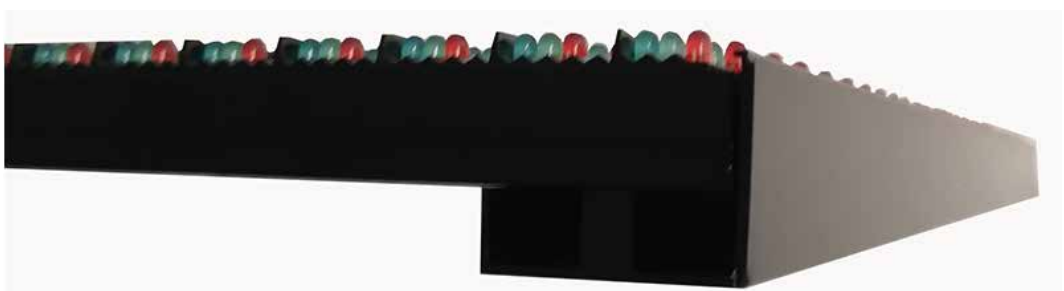
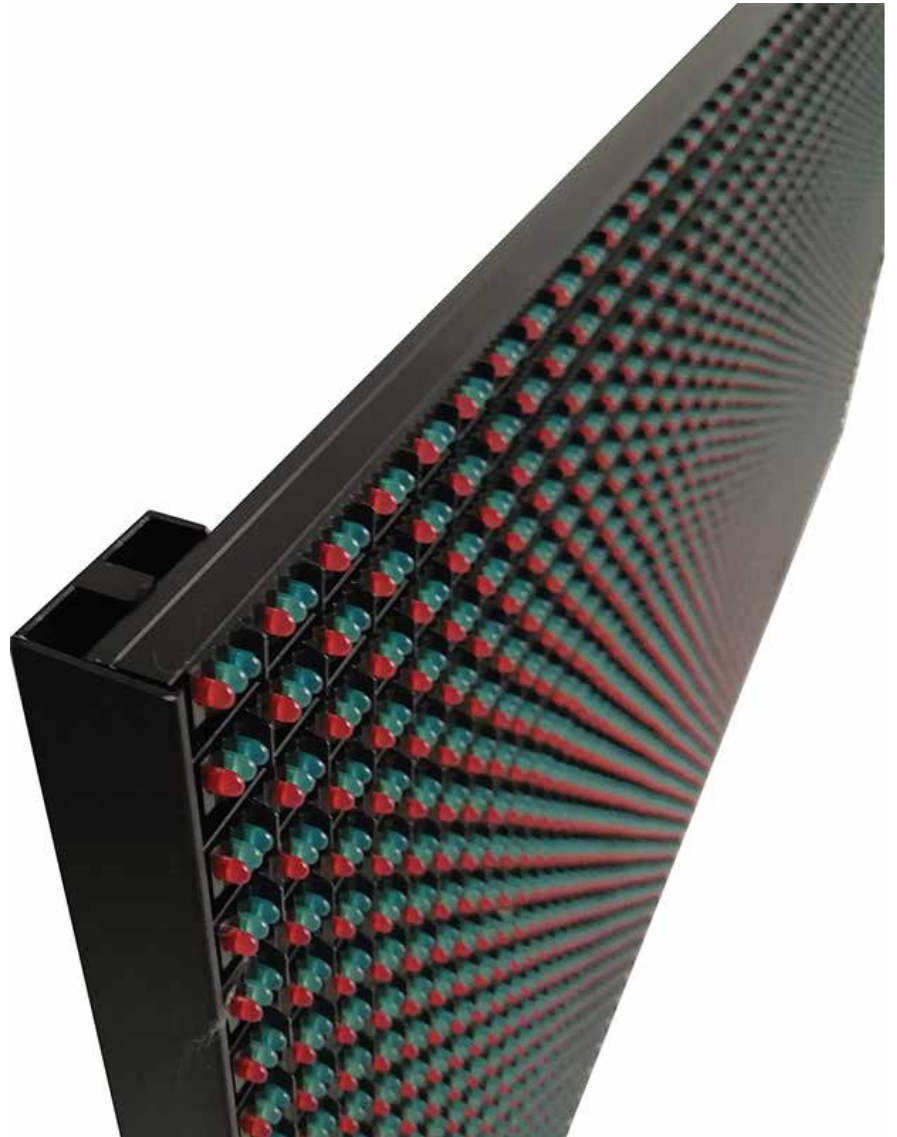
QUALITY IN DETAIL

○ TECHNICAL SPECIFICATION

MODEL NAME	P15
Series	Transparent
IP Rating	IP 65
Pixel Pitch	P31,25 / P15,625
Transparancy	0,6
Pixel Configuration	DIP346
LED	Black Shell
Processing	14-16 Bit
Pixel Density / m2	2048
Resolution/SQM	32 x 64
Cabinet Resolution 1000 x 500mm	16 x 64
Pixel Density / Cabinet 1.000 x 500	1024
Module Size (mm)	500 x 250
Cabinet Size (mm)	1000 x 500 x 80mm
Module Per Cabinet	
Module Resolution	32 x 16
Weight Per Panel Net kg. 640x1920mm	9
Rotation per 90 Degree	✓
Free Rotation (with R5)	○
Mapping	✓
Clear View	○
Low Latency	○
HDR	○
Power Consumption (w/sqm)	<800W
Power for Playing (w/sqm)	<350W
Driving Method	Static
Brightness	>6000 Nits
Refresh Rate	>1920Hz
Refresh Rate High Refresh	-
Refresh Quality	Standart Quality
High Refresh (PLL inside)	-
High Refresh Power Saving	-
High Refresh Dynamic Power Saving	-
Driving IC Type	Ordinary
Refrate Quality 2	Standart Quality
No Waterless Ripple of Camera	>%50
Cabinet Material	Die-Casting Magnesium
Horizontal Viewing Angle	140 (±30)
Vertical Viewing Angle	140 (±30)
Expected LED Lifetime %50	100,000 Hours
IP Rating	IP 67
PCB Quality	Best Quality
Module - Mask Quality	Best Quality
LED Chip	Class A
Picture / Video Quality	Best Quality
Grey Scale	65536
Control Systems	Nova Star
working environment	-35 ~ + 80°C / -55 ~ + 120°C
Voltage Range	200 ~ 240VAC
Packing include	Plate-Power-Cat5 Cable
Certificate	CE/EMC/LVD-ATR-EUR1 ISO-9001:2015 ISO-14001:2015

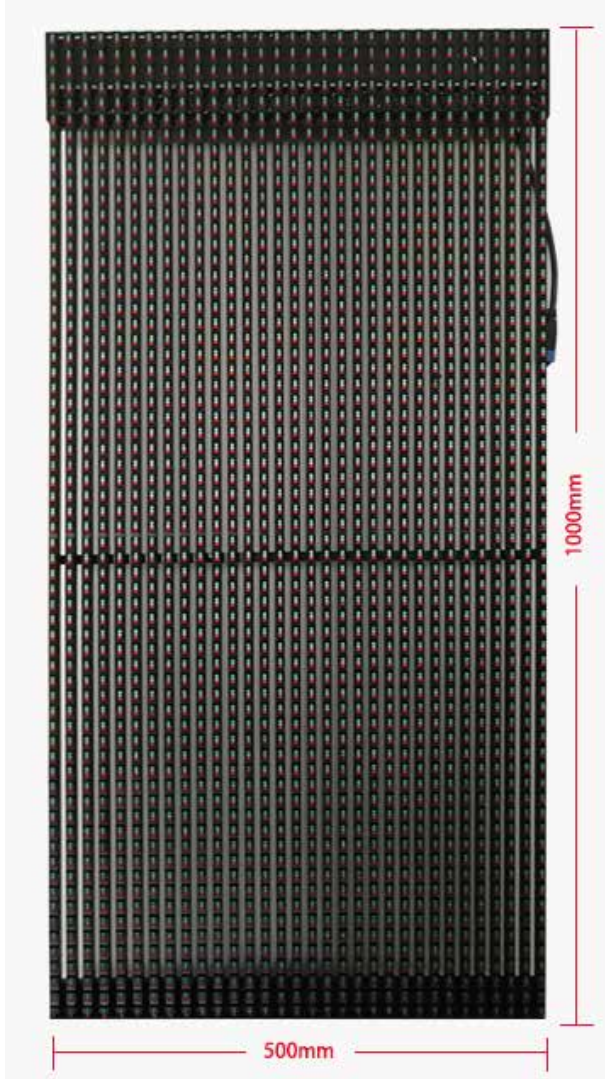
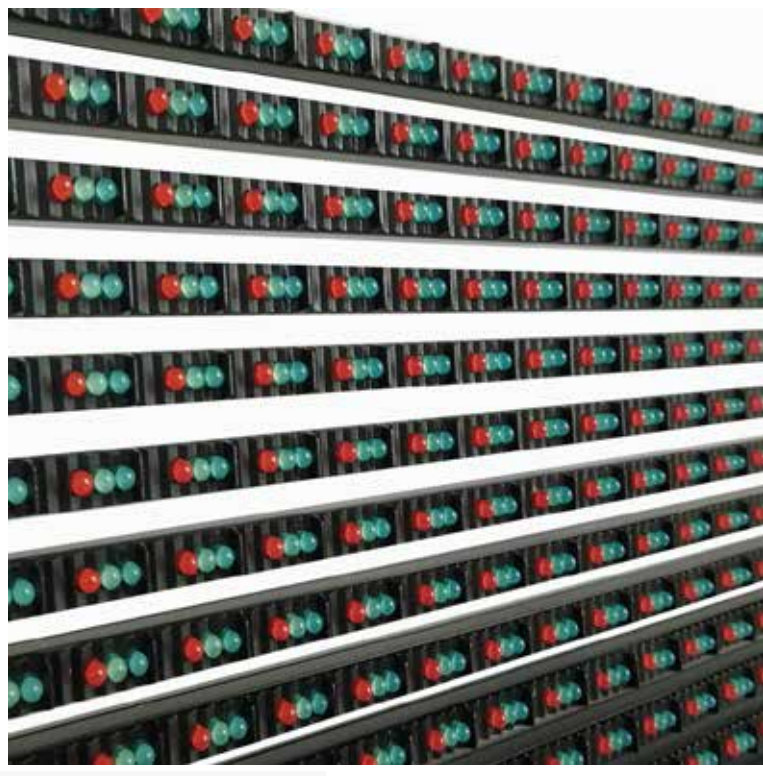
The data written in the catalog may differ by + - 15%

PRODUCT PHOTO



QUALITY IN DETAIL

PRODUCT PHOTO



PRODUCT PHOTO



QUALITY IN DETAIL



PRODUCT PHOTO



AVA LED

www.avaledscreen.com
info@avaledscreen.com

AVA GROUP GMBH

Adress: Goethestraße 7D - 40237 Düsseldorf / Germany

Phone : +49 211 730 64 817

